

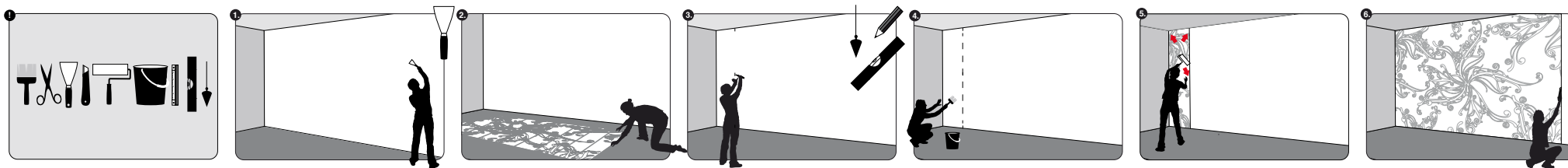
## INSTRUCTIONS TO HANG A MAP MURAL

The Quadrangle, Seale-Hayne, Newton Abbot, Devon TQ12 6NQ

Email: [info@gomaps.co.uk](mailto:info@gomaps.co.uk)

Website: [www.gomaps.co.uk](http://www.gomaps.co.uk)

Instagram: @gomaps



### Information to start:

The wall mural is supplied in 'drops' of equal width (up to 1200 mm) and length. Carefully unpack these drops and lay them out in order. You'll note that the whole image has an additional 50mm bleed all round and each section join has a 25mm overlap left and right, to create an overlap that's cut back to create an accurate butt joint.

1. All surfaces should be smooth, dry, stainless and free from dust and grease.
2. Lay out the wallpaper before hanging and check the map position before application.
3. To mark the position of the first panel, draw vertical lines on the wall, using a pencil, a level and a plumbline.
4. Paste the wall not the wallpaper. Apply the glue evenly and directly to the first part of the wall surface. Use commercial glue for non-woven wallcoverings.
5. Hang the 1st wallcovering strip to the plumbline then paste and match up the second strip and match up. Remember there is a 25 mm overlap. Press each panel with a soft brush or roller, or a dry cloth onto the wall. Work from top to bottom and from centre to the edges. The drying period must be quite long, as drying too quickly will cause separation of the edges and cracking of the mural could occur. Apply wallpaper paste to the next section of wall. The second and subsequent drops should be overlapped by 50mm to make sure that the image aligns accurately.
6. **Trimming the joins.**  
Using a straight edge and sharp blade, trim down the middle of the overlap, then remove the excess wall mural. A final application of paste can be applied beneath the joints using a paintbrush. Smooth down both edges to make a seamless butt joint, making sure the wall mural is fixed at the edges.  
Finally trim any excess carefully. Remove excess paste from the wallpaper with a moist foam immediately.

### Wallpaper specifications:

A smooth, matt non-woven wallpaper of 300microns with high opacity and excellent wet strength resistance. Can be hung with standard wallpaper paste.

### Matters regarding a Gomaps Map/Product:

1. The map has been reproduced under License issued by the an external licensor and cannot be further reproduced.
2. Minor variations in colour quality or distortions may occur on this map due to the result of the old maps scanning and printing process.
3. This map can be tricky to match up due the map details. For best results Gomaps recommends you use a competent wallpaper hanger. Alternatively please contact Gomaps for a quotation to hang the map.